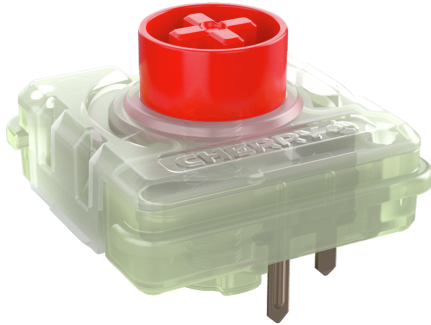


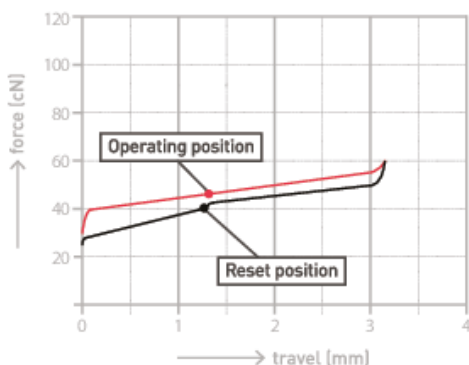
MX LOW PROFILE 2.0 RED

Quick-witted, smooth and direct



Models may vary from the image shown

Original CHERRY MX is the world's leading precision technology for mechanical keyboard switches. The CHERRY Gold Crosspoint contact mechanism and the "Made in Germany" manufacturing quality are unique. The CHERRY MX LOW PROFILE is a high-precision CHERRY MX switch, specially designed for notebook and desktop applications with a low profile.



FUNCTION AND PERFORMANCE

- Linear switching
- 45 cN operating force
- 1.2 mm pre travel
- 3.2 mm total travel
- No click

TECHNICAL DATA

Actuation characteristic:	linear
Total key travel:	3,2 mm
Pre-Travel:	1,2 mm
Actuation force:	45 cN
Switching voltage:	2 - 12V AC/DC
Switching current:	max. 10 mA min. 10 µA
Dielectric strength DIN IEC 60512-2:	500 V / 50 Hz
Spring:	Stainless steel
IP protection class:	40
Warranty:	2 years warranty
Bounce time:	typically < 1 ms
Designation:	CHERRY MX LOW PROFILE 2.0 RED
Hotswap:	no
USP:	Quick-witted, smooth and direct
Noise level:	No Click
Actuation force:	medium (45-55 cN)
Lighting:	SMD LED only
Mounting pins:	without pins - faceplate mount (3 Pins)

Produktname	Bestellnummer	Mounting pins	LED diode	LED wire bridge	RGB	Switches
MX LOW PROFILE 2.0 RED	MX2B-L2NA	without pins - faceplate mount (3 Pins)	without diode		yes	

Please contact your local CHERRY service and support teams or your CHERRY sales partners for versions available in your country.